



'EXERCISE IS KEY NOT ONLY TO PHYSICAL HEALTH BUT TO PEACE OF MIND.'

NELSON MANDELA

PARTNER WITH US: KEEPING ACTIVE AT UNDERSHAW

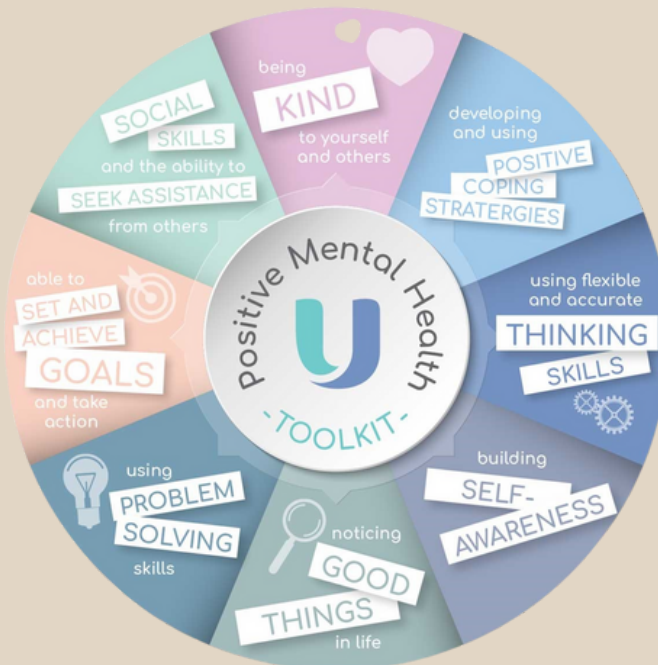


Undershaw

Eliminating the impossible

www.undershaw.education

hello@undershaw.education



There's play equipment and then there's Undershaw play equipment – and we do things a little differently. All children need free play. Our students need free play too but they also need opportunities to regulate their emotions and reintegrate with their sensory environment.

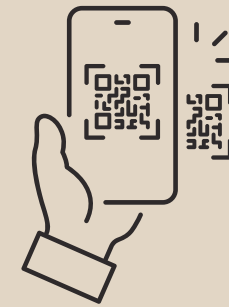
Break times in the teaching timetable are vital for nurturing the social aspects of our school community. Friendships are formed and strengthened, peer groups established, and informal student mentor relationships developed. These societal networking opportunities, in whatever form they come, are all rich experiences that stand our students in good stead for their independent lives beyond Undershaw.

Play apparatus, particularly that which encourages gross motor skill development, is a necessity in our environment where sensory regulation is a daily challenge for the majority of our students.

This equipment is vital for our students as they strive to place themselves in the very best mental and emotional frame of mind for learning, be that academic or therapeutic.



Please donate now and support our Outdoor Play Equipment fundraising campaign



4 pieces of outdoor gym
equipment = cost ranging
from £1,160 - £2,030 each

**Project total =
£6,918**

(including supply, delivery,
installation and VAT)

Please scan the QR code for a direct link to our fundraising platform.

If you would like to continue to support Undershaw with future fundraising campaigns please contact fundraising@undershaw.education for details.